

Flange socket connector - M12 female (F)

Description:

Used for fixed I/O connecting such as panel and cabinet. Standard M12(female) threaded connection. 4, 5, 8-core are optional.

Features:

- Optional front/rear panel installation
- Customized cable lengths



Technical Data

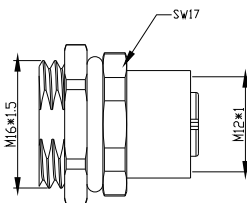
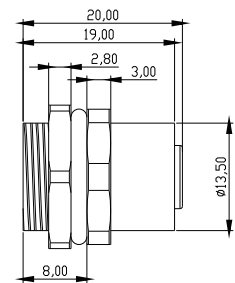
Cable jacket	Description	Type	Pin	Rated current/voltage	Dia. of cable
Brass zinc nickel plating	Female 4-core rear panel installation	FO12.4-0/M16	4	4A/250V	0.25-1mm ²
	Female 4-core front panel installation	FO12.4-0/M16/F	4	4A/250V	0.25-1mm ²
	Female 5-core rear panel installation	FO12.5-0/M16	5	4A/60V	0.25-0.75mm ²
	Female 5-core front panel installation	FO12.5-0/M16/F	5	4A/60V	0.25-0.75mm ²
	Female 8-core rear panel installation	FO12.8-0/M16	8	2A/30V	Max.0.25mm ²
	Female 8-core front panel installation	FO12.8-0/M16/F	8	2A/30V	Max.0.25mm ²

Selection Instructions

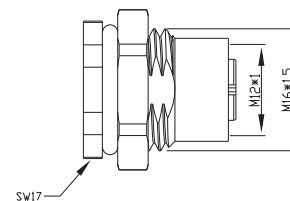
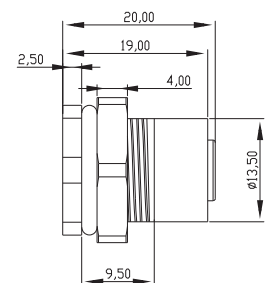
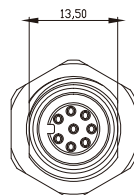
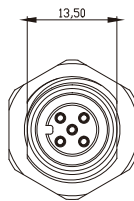
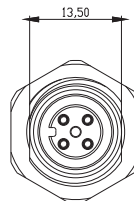
FO12.4 - 0/M16

Attn : Standard

Dimensions



Front panel installation



Rear panel installation