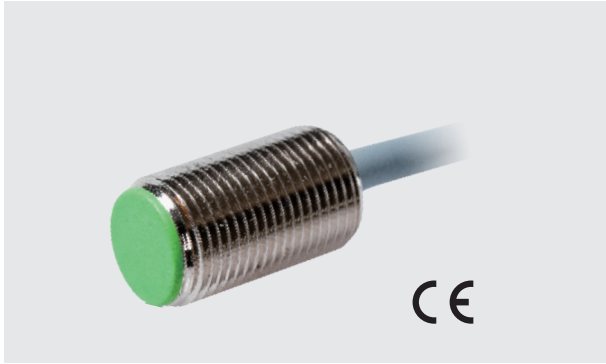


<< Inductive Sensor

Metal Barrel-M12SS



Description:

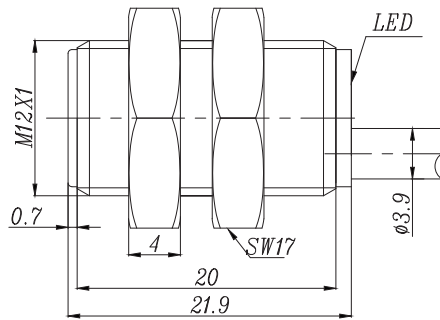
Brass nickel-plated, threaded barrel, DC 3-wire output, IP67 protection class, LED indicator, super short size.

Technical Data:

Type	Rated Operating Distance S_n	Mounting	Output	Voltage Range U_B	Rated Current	Switching Frequency	Ambient Temperature	Connection	Fig
Fi2-M12SS-OP6L	2mm	Flush	PNP NO	10...30VDC	≤200mA	1000Hz	-25...70°C	2m cable	Fig.1
Fi2-M12SS-ON6L	2mm	Flush	NPN NO	10...30VDC	≤200mA	1000Hz	-25...70°C	2m cable	Fig.1
Fi2-M12SS-CP6L	2mm	Flush	PNP NC	10...30VDC	≤200mA	1000Hz	-25...70°C	2m cable	Fig.1
Fi2-M12SS-CN6L	2mm	Flush	NPN NC	10...30VDC	≤200mA	1000Hz	-25...70°C	2m cable	Fig.1

Dimensions:

Fig.1



Metal Barrel-M12SS



Description:

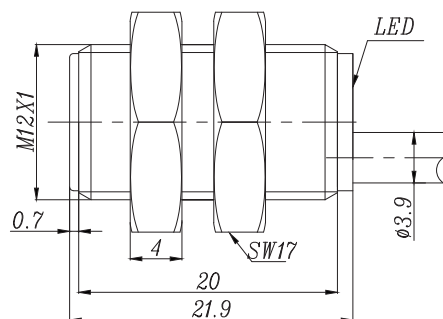
Brass nickel-plated, threaded barrel, DC 2-wire output, IP67 protection class, LED indicator, super short size.

Technical Data:

Type	Rated Operating Distance Sn	Mounting	Output	Voltage Range U_B	Rated Current	Switching Frequency	Ambient Temperature	Connection	Fig
Fi2-M12SS-OD6L	2mm	Flush	DC NO	10...30VDC	$\leq 100\text{mA}$	1000Hz	-25...70°C	2m cable	Fig.1
Fi2-M12SS-CD6L	2mm	Flush	DC NC	10...30VDC	$\leq 100\text{mA}$	1000Hz	-25...70°C	2m cable	Fig.1

Dimensions:

Fig.1



◀◀ Inductive Sensor

Metal Barrel-M12S (Short)



Description:

Brass nickel-plated, threaded barrel, DC 2-wire output, IP67 protection class, LED indicator, short size.

Technical Data:

Type	Rated Operating Distance S_n	Mounting	Output	Voltage Range U_B	Rated Current	Switching Frequency	Ambient Temperature	Connection	Fig
Fi2-M12S-OD6L	2mm	Flush	DC NO	10...30VDC	≤100mA	1000Hz	-25...70°C	2m cable	Fig.1
Fi2-M12S-CD6L	2mm	Flush	DC NC	10...30VDC	≤100mA	1000Hz	-25...70°C	2m cable	Fig.1
Ni4-M12S-OD6L	4mm	Non-flush	DC NO	10...30VDC	≤100mA	800Hz	-25...70°C	2m cable	Fig.2
Ni4-M12S-CD6L	4mm	Non-flush	DC NC	10...30VDC	≤100mA	800Hz	-25...70°C	2m cable	Fig.2
Ni5-M12S-OD6L	5mm	Non-flush	DC NO	10...30VDC	≤100mA	800Hz	-25...70°C	2m cable	Fig.2
Ni5-M12S-CD6L	5mm	Non-flush	DC NC	10...30VDC	≤100mA	800Hz	-25...70°C	2m cable	Fig.2
Fi2-M12S-OD6L-Q12	2mm	Flush	DC NO	10...30VDC	≤100mA	1000Hz	-25...70°C	M12 Connector	Fig.3
Fi2-M12S-CD6L-Q12	2mm	Flush	DC NC	10...30VDC	≤100mA	1000Hz	-25...70°C	M12 Connector	Fig.3
Ni4-M12S-OD6L-Q12	4mm	Non-flush	DC NO	10...30VDC	≤100mA	800Hz	-25...70°C	M12 Connector	Fig.4
Ni4-M12S-CD6L-Q12	4mm	Non-flush	DC NC	10...30VDC	≤100mA	800Hz	-25...70°C	M12 Connector	Fig.4
Ni5-M12S-OD6L-Q12	5mm	Non-flush	DC NO	10...30VDC	≤100mA	800Hz	-25...70°C	M12 Connector	Fig.4
Ni5-M12S-CD6L-Q12	5mm	Non-flush	DC NC	10...30VDC	≤100mA	800Hz	-25...70°C	M12 Connector	Fig.4

Dimensions:

Fig.1

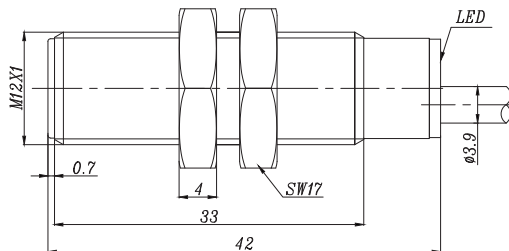


Fig.2

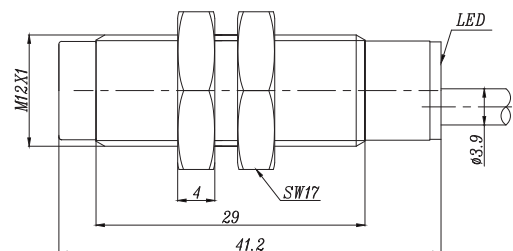


Fig.3

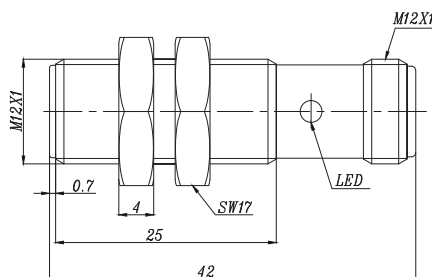
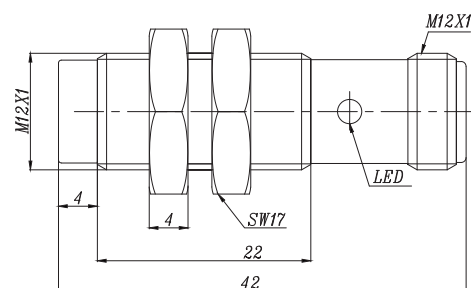


Fig.4



Metal Barrel-M12S (Short)



Description:

Brass nickel-plated, threaded barrel, DC 3-wire output, IP67 protection class, LED indicator, short size.

Technical Data:

Type	Rated Operating Distance S_n	Mounting	Output	Voltage Range U_B	Rated Current	Switching Frequency	Ambient Temperature	Connection	Fig
Fi2-M12S-OP6L	2mm	Flush	PNP NO	10...30VDC	$\leq 200\text{mA}$	1000Hz	-25...70°C	2m cable	Fig.1
Fi2-M12S-ON6L	2mm	Flush	NPN NO	10...30VDC	$\leq 200\text{mA}$	1000Hz	-25...70°C	2m cable	Fig.1
Fi2-M12S-CP6L	2mm	Flush	PNP NC	10...30VDC	$\leq 200\text{mA}$	1000Hz	-25...70°C	2m cable	Fig.1
Fi2-M12S-CN6L	2mm	Flush	NPN NC	10...30VDC	$\leq 200\text{mA}$	1000Hz	-25...70°C	2m cable	Fig.1
Ni4-M12S-OP6L	4mm	Non-flush	PNP NO	10...30VDC	$\leq 200\text{mA}$	800Hz	-25...70°C	2m cable	Fig.2
Ni4-M12S-ON6L	4mm	Non-flush	NPN NO	10...30VDC	$\leq 200\text{mA}$	800Hz	-25...70°C	2m cable	Fig.2
Ni4-M12S-CP6L	4mm	Non-flush	PNP NC	10...30VDC	$\leq 200\text{mA}$	800Hz	-25...70°C	2m cable	Fig.2
Ni4-M12S-CN6L	4mm	Non-flush	NPN NC	10...30VDC	$\leq 200\text{mA}$	800Hz	-25...70°C	2m cable	Fig.2
Ni5-M12S-OP6L	5mm	Non-flush	PNP NO	10...30VDC	$\leq 200\text{mA}$	800Hz	-25...70°C	2m cable	Fig.2
Ni5-M12S-ON6L	5mm	Non-flush	NPN NO	10...30VDC	$\leq 200\text{mA}$	800Hz	-25...70°C	2m cable	Fig.2
Ni5-M12S-CP6L	5mm	Non-flush	PNP NC	10...30VDC	$\leq 200\text{mA}$	800Hz	-25...70°C	2m cable	Fig.2
Ni5-M12S-CN6L	5mm	Non-flush	NPN NC	10...30VDC	$\leq 200\text{mA}$	800Hz	-25...70°C	2m cable	Fig.2

Dimensions:

Fig.1

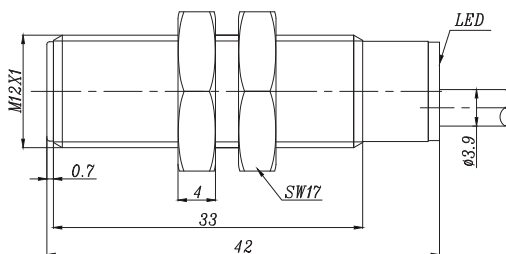
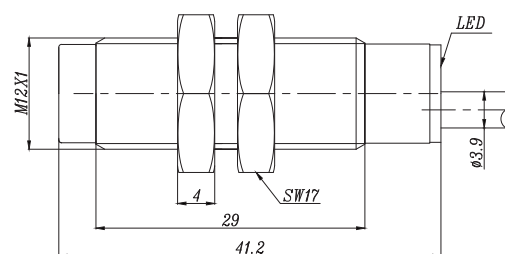


Fig.2



<< Inductive Sensor

Metal Barrel-M12S (Short)



Description:

Brass nickel-plated, threaded barrel, DC 3-wire output, LED indicator, IP67 protection class, short size.

Technical Data:

Type	Rated Operating Distance S_n	Mounting	Output	Voltage Range U_B	Rated Current	Switching Frequency	Ambient Temperature	Connection	Fig
Fi2-M12S-OP6L-Q12	2mm	Flush	PNP NO	10...30VDC	$\leq 100\text{mA}$	1000Hz	-25...70°C	M12 Connector	Fig.1
Fi2-M12S-ON6L-Q12	2mm	Flush	NPN NO	10...30VDC	$\leq 100\text{mA}$	1000Hz	-25...70°C	M12 Connector	Fig.1
Fi2-M12S-CP6L-Q12	2mm	Flush	PNP NC	10...30VDC	$\leq 100\text{mA}$	1000Hz	-25...70°C	M12 Connector	Fig.1
Fi2-M12S-CN6L-Q12	2mm	Flush	NPN NC	10...30VDC	$\leq 100\text{mA}$	1000Hz	-25...70°C	M12 Connector	Fig.1
Ni4-M12S-OP6L-Q12	4mm	Non-flush	PNP NO	10...30VDC	$\leq 100\text{mA}$	800Hz	-25...70°C	M12 Connector	Fig.2
Ni4-M12S-ON6L-Q12	4mm	Non-flush	NPN NO	10...30VDC	$\leq 100\text{mA}$	800Hz	-25...70°C	M12 Connector	Fig.2
Ni4-M12S-CP6L-Q12	4mm	Non-flush	PNP NC	10...30VDC	$\leq 100\text{mA}$	800Hz	-25...70°C	M12 Connector	Fig.2
Ni4-M12S-CN6L-Q12	4mm	Non-flush	NPN NC	10...30VDC	$\leq 100\text{mA}$	800Hz	-25...70°C	M12 Connector	Fig.2
Ni5-M12S-OP6L-Q12	5mm	Non-flush	PNP NO	10...30VDC	$\leq 100\text{mA}$	800Hz	-25...70°C	M12 Connector	Fig.2
Ni5-M12S-ON6L-Q12	5mm	Non-flush	NPN NO	10...30VDC	$\leq 100\text{mA}$	800Hz	-25...70°C	M12 Connector	Fig.2
Ni5-M12S-CP6L-Q12	5mm	Non-flush	PNP NC	10...30VDC	$\leq 100\text{mA}$	800Hz	-25...70°C	M12 Connector	Fig.2
Ni5-M12S-CN6L-Q12	5mm	Non-flush	NPN NC	10...30VDC	$\leq 100\text{mA}$	800Hz	-25...70°C	M12 Connector	Fig.2

Dimensions:

Fig.1

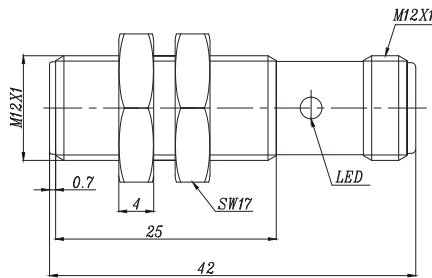
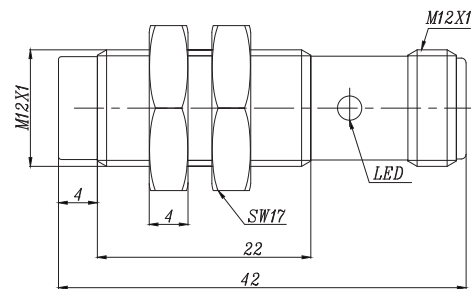


Fig.2



Metal Barrel-M12S (Short)



Description:

Brass nickel-plated, threaded barrel, DC 4-wire output, yellow LED indicator, IP67 protection class, short size.

Technical Data:

Type	Rated Operating Distance S_n	Mounting	Output	Voltage Range U_B	Rated Current	Switching Frequency	Ambient Temperature	Connection	Fig
Fi2-M12S-BP6L	2mm	Flush	PNP NO+NC	10...30VDC	≤200mA	1000Hz	-25...70°C	2m cable	Fig.1
Fi2-M12S-BN6L	2mm	Flush	NPN NO+NC	10...30VDC	≤200mA	1000Hz	-25...70°C	2m cable	Fig.1
Ni4-M12S-BP6L	4mm	Non-flush	PNP NO+NC	10...30VDC	≤200mA	800Hz	-25...70°C	2m cable	Fig.2
Ni4-M12S-BN6L	4mm	Non-flush	NPN NO+NC	10...30VDC	≤200mA	800Hz	-25...70°C	2m cable	Fig.2
Ni5-M12S-BP6L	5mm	Non-flush	PNP NO+NC	10...30VDC	≤200mA	800Hz	-25...70°C	2m cable	Fig.2
Ni5-M12S-BN6L	5mm	Non-flush	NPN NO+NC	10...30VDC	≤200mA	800Hz	-25...70°C	2m cable	Fig.2
Fi2-M12S-BP6L-Q12	2mm	Flush	PNP NO+NC	10...30VDC	≤200mA	1000Hz	-25...70°C	M12 Connector	Fig.3
Fi2-M12S-BN6L-Q12	2mm	Flush	NPN NO+NC	10...30VDC	≤200mA	1000Hz	-25...70°C	M12 Connector	Fig.3
Ni4-M12S-BP6L-Q12	4mm	Non-flush	PNP NO+NC	10...30VDC	≤200mA	800Hz	-25...70°C	M12 Connector	Fig.4
Ni4-M12S-BN6L-Q12	4mm	Non-flush	NPN NO+NC	10...30VDC	≤200mA	800Hz	-25...70°C	M12 Connector	Fig.4
Ni5-M12S-BP6L-Q12	5mm	Non-flush	PNP NO+NC	10...30VDC	≤200mA	800Hz	-25...70°C	M12 Connector	Fig.4
Ni5-M12S-BN6L-Q12	5mm	Non-flush	NPN NO+NC	10...30VDC	≤200mA	800Hz	-25...70°C	M12 Connector	Fig.4

Dimensions:

Fig.1

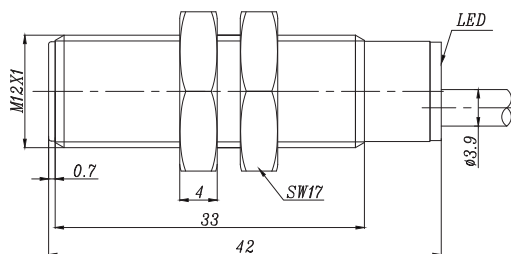


Fig.2

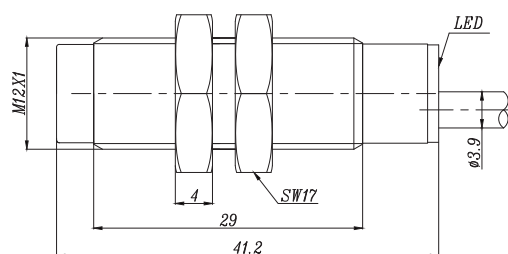


Fig.3

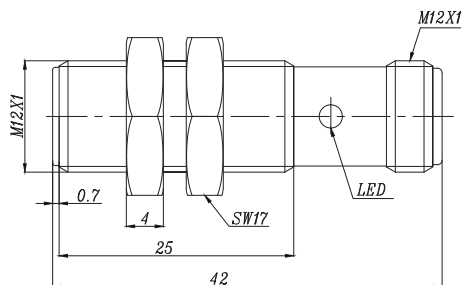


Fig.4

