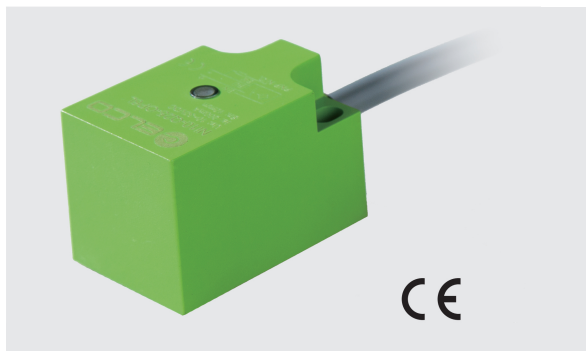


<< Inductive Sensor

Plastic Rectangular-Q25



Description:

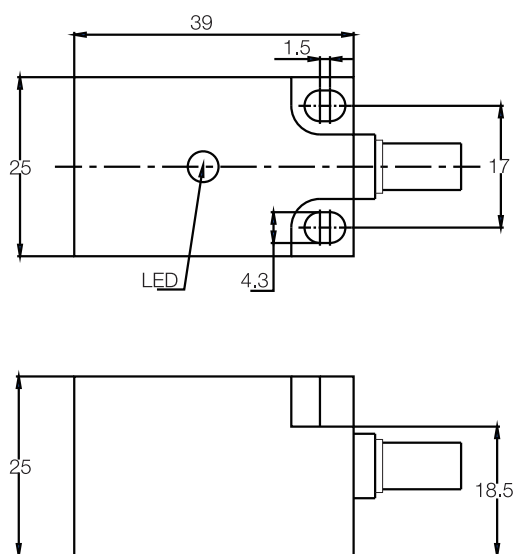
Plastic housing, miniature rectangular 25x25mm, DC 2-wire output, AC 2-wire output, AC/DC 2-wire output, IP67 protection class, LED indicator.

Technical Data:

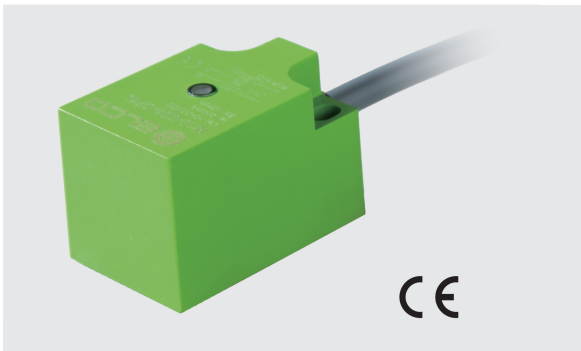
Type	Rated Operating Distance Sn	Mounting	Output	Voltage Range U _B	Rated Current	Switching Frequency	Ambient Temperature	Connection	Fig
Fi7-Q25-OD6L	7mm	Flush	NO DC	10...30VDC	≤100mA	200Hz	-25...70°C	2m cable	Fig.1
Fi7-Q25-CD6L	7mm	Flush	NC DC	10...30VDC	≤100mA	200Hz	-25...70°C	2m cable	Fig.1
Fi7-Q25-OSA3L	7mm	Flush	NO AC	20...250VAC	≤200mA	300Hz	-25...70°C	2m cable	Fig.1
Fi7-Q25-CSA3L	7mm	Flush	NC AC	20...250VAC	≤200mA	300Hz	-25...70°C	2m cable	Fig.1
Ni10-Q25-OD6L	10mm	Non-flush	NO DC	10...30VDC	≤100mA	200Hz	-25...70°C	2m cable	Fig.1
Ni10-Q25-CD6L	10mm	Non-flush	NC DC	10...30VDC	≤100mA	200Hz	-25...70°C	2m cable	Fig.1
Ni10-Q25-OSA3L	10mm	Non-flush	NO AC	20...250VAC	≤200mA	300Hz	-25...70°C	2m cable	Fig.1
Ni10-Q25-CSA3L	10mm	Non-flush	NC AC	20...250VAC	≤200mA	300Hz	-25...70°C	2m cable	Fig.1
Fi7-Q25-OA41L	7mm	Flush	NO DC/AC	20...250VAC/DC	DC≤100mA/AC≤200mA	300Hz	-25...70°C	2m cable	Fig.1
Fi7-Q25-CA41L	7mm	Flush	NC DC/AC	20...250VAC/DC	DC≤100mA/AC≤200mA	300Hz	-25...70°C	2m cable	Fig.1
Ni10-Q25-OA41L	10mm	Non-flush	NO DC/AC	20...250VAC/DC	DC≤100mA/AC≤200mA	300Hz	-25...70°C	2m cable	Fig.1
Ni10-Q25-CA41L	10mm	Non-flush	NC DC/AC	20...250VAC/DC	DC≤100mA/AC≤200mA	300Hz	-25...70°C	2m cable	Fig.1

Dimensions:

Fig.1



Plastic Rectangular-Q25



Description:

Plastic housing, miniature rectangular 25x25mm, DC 3-wire output, IP67 protection class, LED indicator.

Technical Data:

Type	Rated Operating Distance S_n	Mounting	Output	Voltage Range U_B	Rated Current	Switching Frequency	Ambient Temperature	Connection	Fig
Fi7-Q25-OP6L	7mm	Flush	PNP NO	10...30VDC	≤200mA	700Hz	-25...70°C	2m cable	Fig.1
Fi7-Q25-ON6L	7mm	Flush	NPN NO	10...30VDC	≤200mA	700Hz	-25...70°C	2m cable	Fig.1
Fi7-Q25-CP6L	7mm	Flush	PNP NC	10...30VDC	≤200mA	700Hz	-25...70°C	2m cable	Fig.1
Fi7-Q25-CN6L	7mm	Flush	NPN NC	10...30VDC	≤200mA	700Hz	-25...70°C	2m cable	Fig.1
Ni10-Q25-OP6L	10mm	Non-flush	PNP NO	10...30VDC	≤200mA	700Hz	-25...70°C	2m cable	Fig.1
Ni10-Q25-ON6L	10mm	Non-flush	NPN NO	10...30VDC	≤200mA	700Hz	-25...70°C	2m cable	Fig.1
Ni10-Q25-CP6L	10mm	Non-flush	PNP NC	10...30VDC	≤200mA	700Hz	-25...70°C	2m cable	Fig.1
Ni10-Q25-CN6L	10mm	Non-flush	NPN NC	10...30VDC	≤200mA	700Hz	-25...70°C	2m cable	Fig.1

Dimensions:

Fig.1

